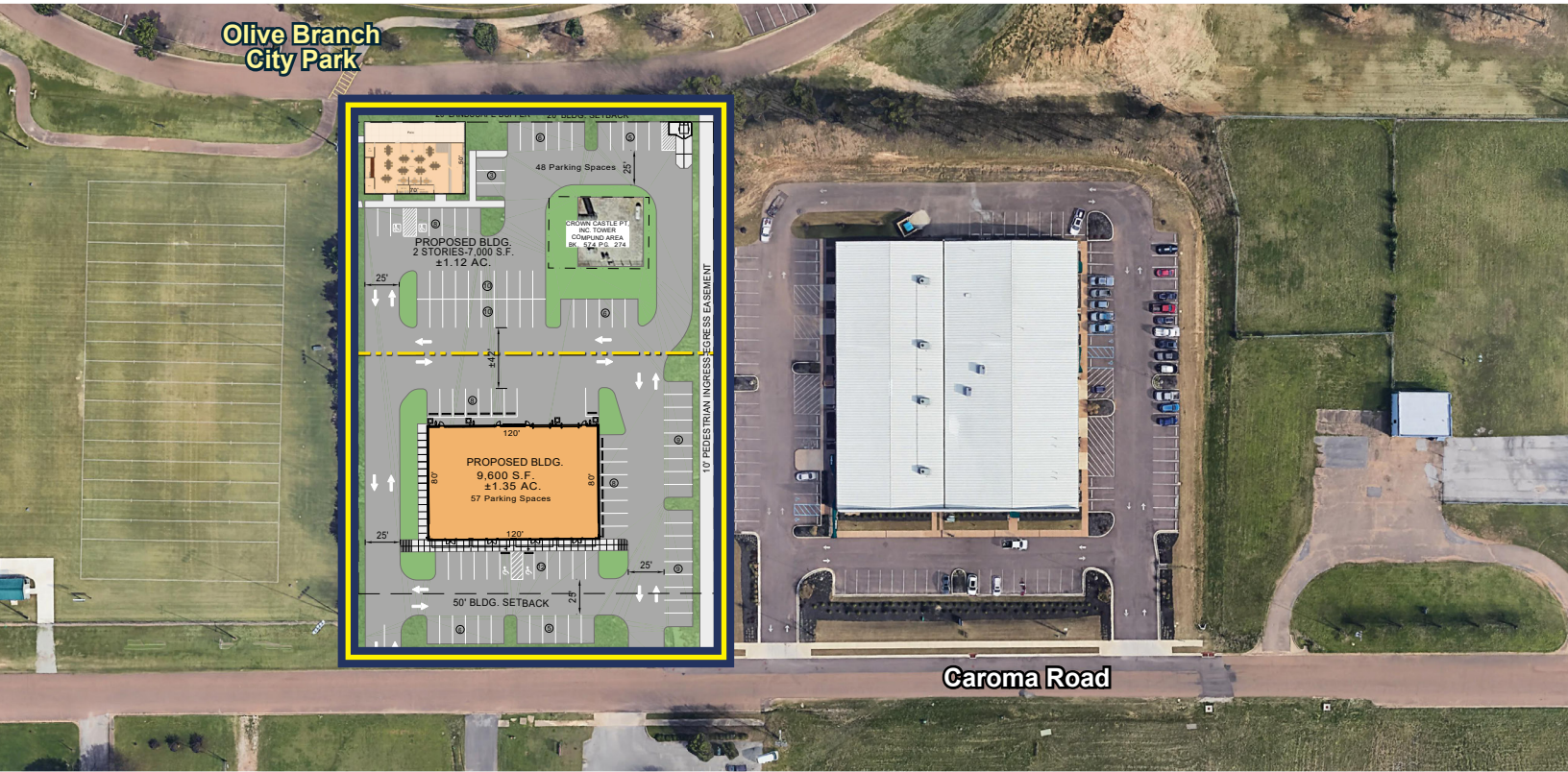


CAROMA BUSINESS CENTER 2

Olive Branch, MS

FOR SALE/ BUILD-TO-SUIT



Great Build-to-Suit Opportunity in Olive Branch, MS

FEATURES

- Build-to-Suit Opportunity on +/-2.46 Acres
- Excellent location on Caroma Street next to Olive Branch City Park
- Minutes from Highway 305, Highway 78, Highway 302
- Close to abundant retail amenities.
- Price: \$3.75/SF
- Zoning: Light Industrial or Commercial

Mark D. Utley, CCIM

(O) 662.895.0099 (C) 901.494.7080

mark@utleyproperties.com



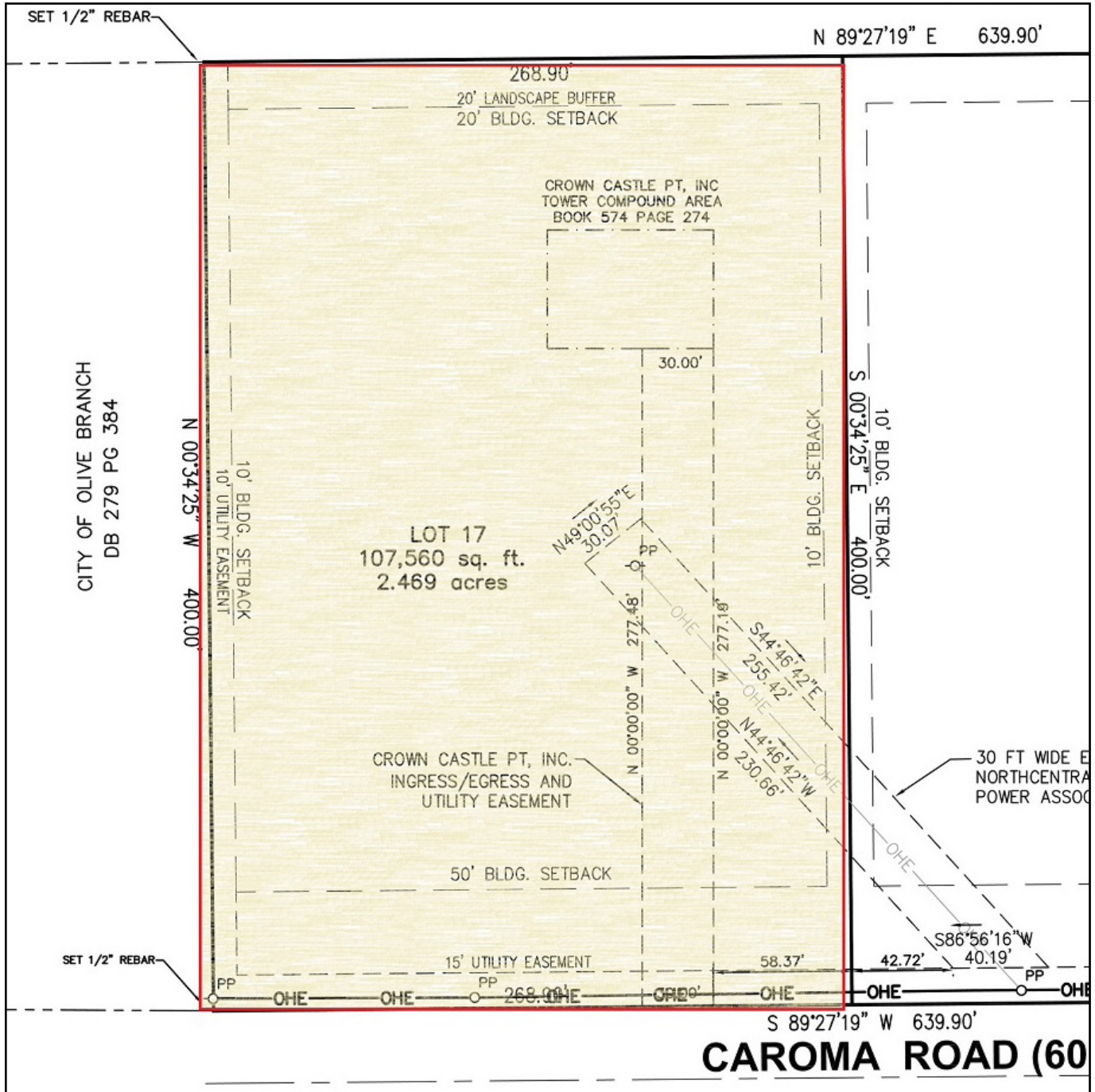
UTLEY PROPERTIES

All information furnished to Utley Properties is from sources judged to be reliable. However, no warranty or representation is made as to its accuracy or completeness. This applies to all pages within this document.

CAROMA BUSINESS CENTER 2

Olive Branch, MS

BUILD-TO-SUIT



For more information, please contact:

Mark D. Utley, CCIM

(O) 662.895.0099 (C) 901.494.7080

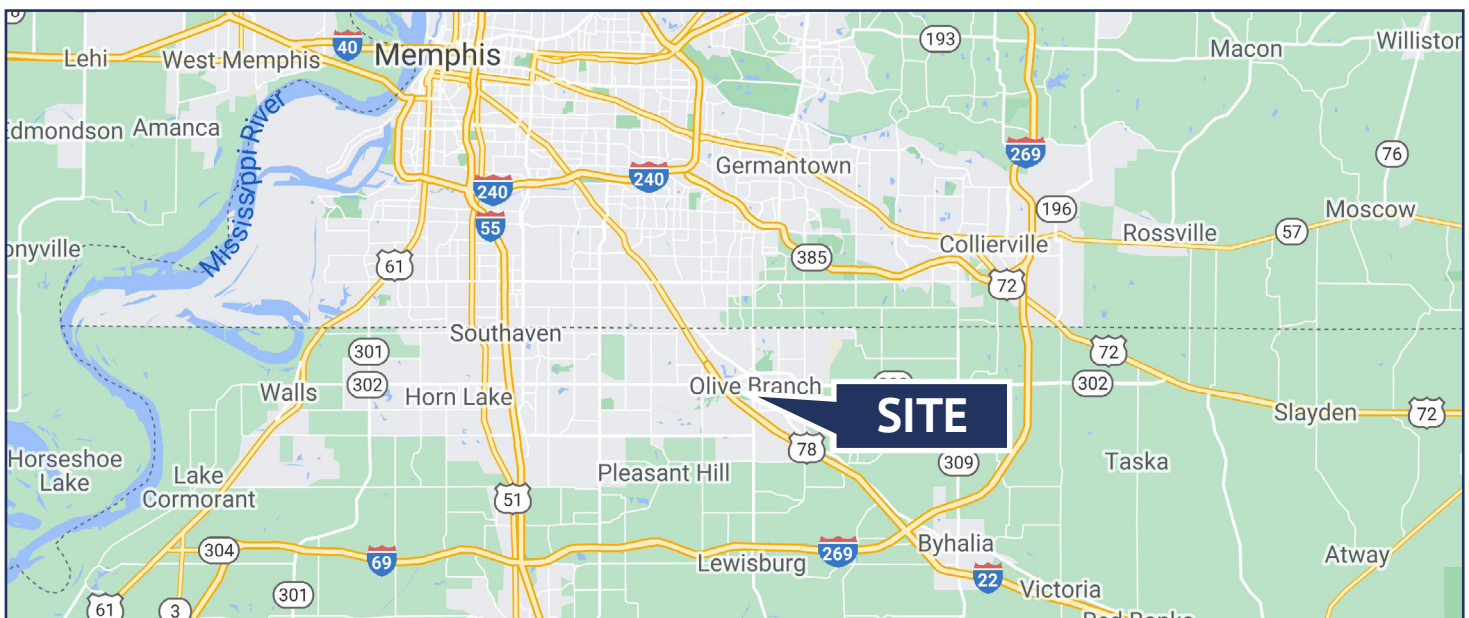
mark@utleyproperties.com



CAROMA BUSINESS CENTER 2

Olive Branch, MS

BUILD-TO-SUIT



For more information, please contact:

Mark D. Utley, CCIM

(O) 662.895.0099 (C) 901.494.7080

mark@utleyproperties.com

