

# HIGH TRAFFIC CORNER LOT AVAILABLE

Goodman & Davidson Rd • Olive Branch, MS  
Memphis MSA

FOR SALE



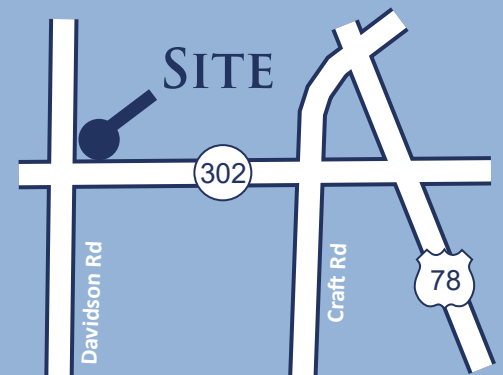
## Highly Visible Lot Available in Booming Olive Branch, MS

### FEATURES

- +/- 2.69 Acres Available
- Highly Visible Corner Lot with traffic light on Goodman Road (Hwy 302) and Davidson Road
- Great location in the Memphis MSA, just minutes from Highway 78 and surrounded by retailers and business.
- Traffic Count of > 37,000 per day
- Zoned Commercial - C-1
- Asking Price: \$10/SF

**Brian Lusk**

(O) 662.895.0099 (C) 662.613.9191  
[brian@utleyproperties.com](mailto:brian@utleyproperties.com)



UTLEY PROPERTIES

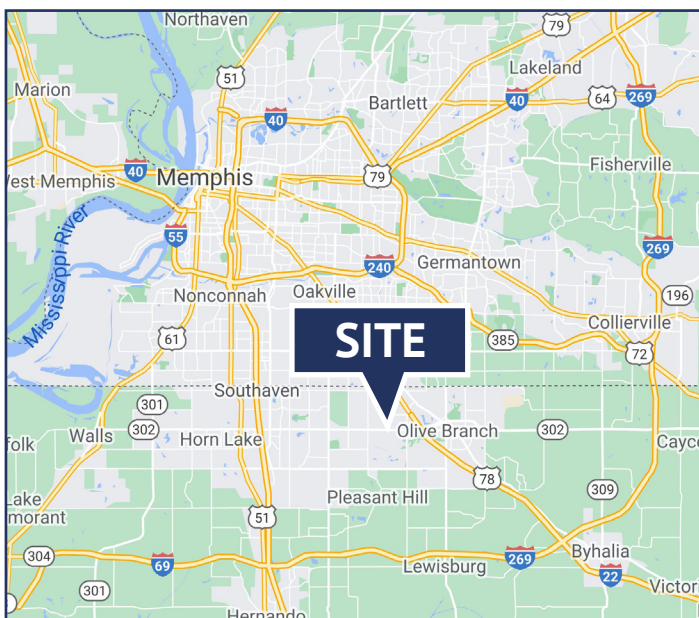
All information furnished to Utley Properties is from sources judged to be reliable. However, no warranty or representation is made as to its accuracy or completeness. This applies to all pages within this document.



# HIGH TRAFFIC CORNER LOT AVAILABLE

Goodman & Davidson Rd • Olive Branch, MS  
Memphis MSA

FOR SALE



## DEMOGRAPHICS

	1 Mile	3 Miles	5 Miles
Population	4,451	31,331	87,078
Ave HH Income	\$88,749	\$80,632	\$81,298
Ave Disposable Income	\$69,945	\$64,393	\$65,910
Total Households	1,646	11,306	30,154

For more information, please contact:

**Brian Lusk**

(O) 662.895.0099 (C) 662.613.9191

mark@utleyproperties.com

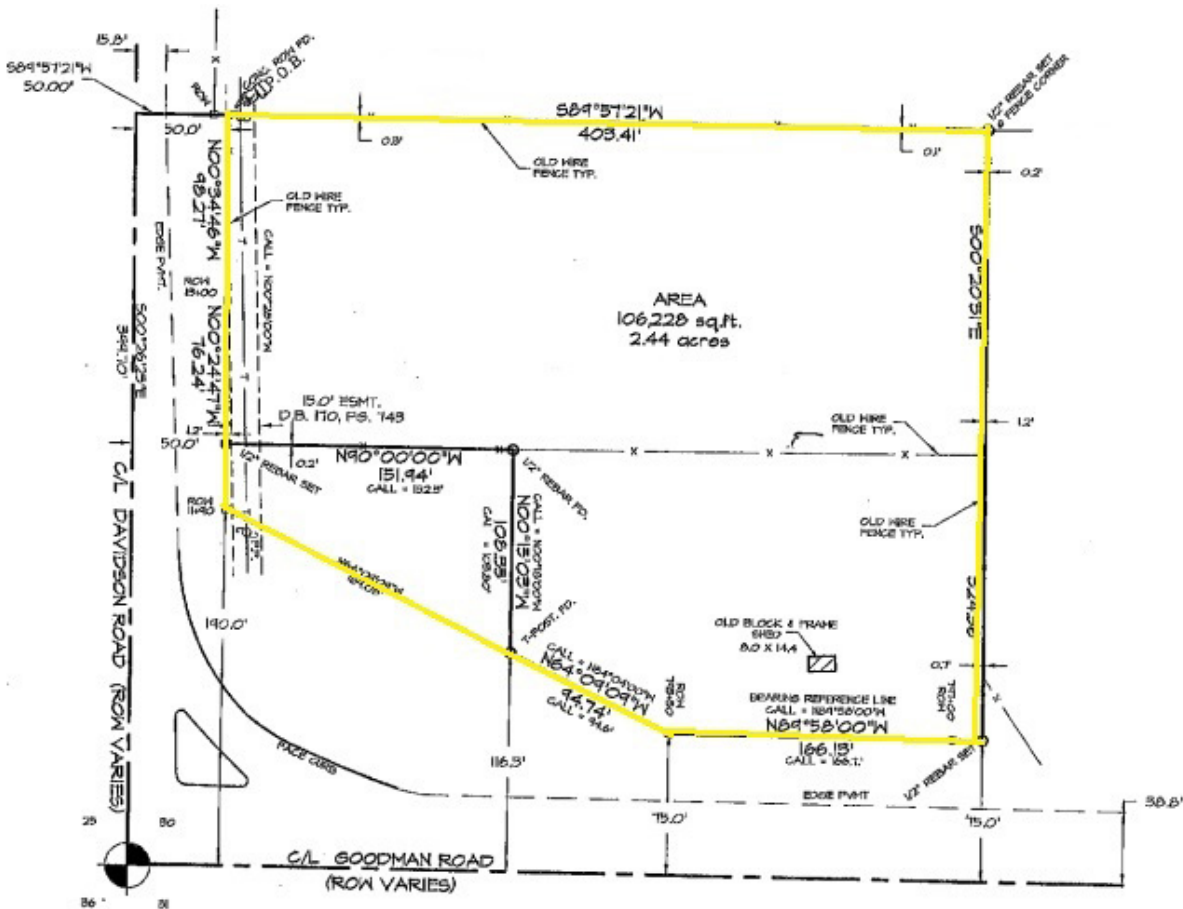
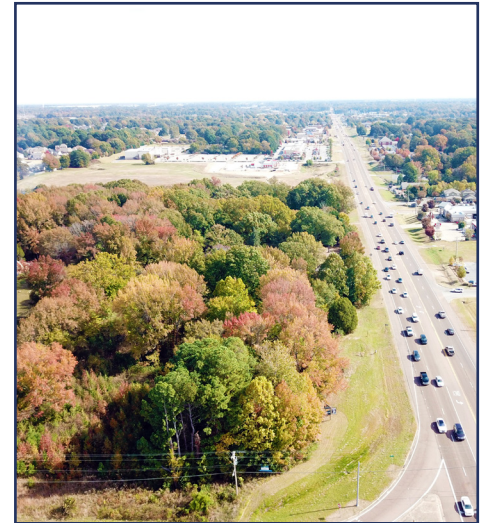
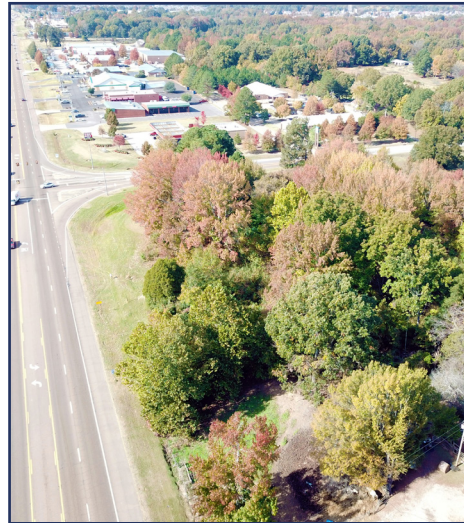




# HIGH TRAFFIC CORNER LOT AVAILABLE

Goodman & Davidson Rd • Olive Branch, MS  
 Memphis MSA

FOR SALE



For more information, please contact:

**Brian Lusk**

(O) 662.895.0099 (C) 662.613.9191

mark@utleyproperties.com

